

SBI PO Preliminary Grand Test –SPP-180651

HINTS & SOLUTIONS

ANSWER KEY

1. (5)	21. (3)	41. (2)	61. (2)	81. (1)
2. (4)	22. (1)	42. (1)	62. (3)	82. (2)
3. (2)	23. (5)	43. (4)	63. (4)	83. (4)
4. (4)	24. (4)	44. (5)	64. (3)	84. (3)
5. (1)	25. (2)	45. (4)	65. (1)	85. (2)
6. (1)	26. (2)	46. (1)	66. (1)	86. (2)
7. (4)	27. (4)	47. (4)	67. (2)	87. (1)
8. (3)	28. (2)	48. (2)	68. (1)	88. (4)
9. (4)	29. (5)	49. (4)	69. (2)	89. (5)
10. (3)	30. (3)	50. (3)	70. (5)	90. (1)
11. (2)	31. (2)	51. (3)	71. (3)	91. (4)
12. (5)	32. (3)	52. (1)	72. (4)	92. (3)
13. (1)	33. (3)	53. (4)	73. (5)	93. (4)
14. (1)	34. (1)	54. (2)	74. (1)	94. (2)
15. (5)	35. (4)	55. (5)	75. (3)	95. (1)
16. (4)	36. (4)	56. (4)	76. (1)	96. (2)
17. (5)	37. (2)	57. (3)	77. (5)	97. (2)
18. (2)	38. (2)	58. (4)	78. (3)	98. (3)
19. (2)	39. (2)	59. (3)	79. (5)	99. (5)
20. (1)	40. (5)	60. (4)	80. (1)	100. (5)

HINTS & SOLUTIONS

1. (5) No correction required;
2. (4) Whatever the reasons;
Replace 'Whichever reasons' with 'Whatever the reasons'.
3. (2) like being transported;
Replace 'like be transported' with 'like being transported'.
4. (4) have paid little heed;
Replace 'has pay little heed' with 'have paid little heed'.
5. (1) cannot wish away;
Replace 'cannot wishes away' with 'cannot wish away'.
6. (1) Change 'dress' to 'dressed'.
7. (4) Change 'deterrent on' to 'deterrent to'.
8. (3) Change 'that it is not a' to 'that it was not a'.
9. (4) Change 'always the development imperatives was' to 'always the development imperatives were'.
10. (3) Change 'and mental agony who he had to suffer' to 'and mental agony which he had to suffer'.
11. (2) "The basic idea of swadeshi is to have a calibrated process of opening of the economy so that all segments are enabled to compete with the best in the world after going through intense internal competition leading to mergers, acquisitions and eliminations."

12. (5) "According to some economists swadeshi does not mean insulating India's economy from the world economy."
13. (1) The finding of the Augus-Reid Group is in favor of "Protectionists"
14. (1) "A clear majority of Americans (56% to 37%) are protectionists even today"
15. (5)
16. (4) It is not mentioned in the passage.
17. (5) **Propagation** means spreading more widely.
Dissemination means spreading widely. So, Propagation is the word which is similar in meaning to Dissemination.
18. (2) **Calibrate**-If you calibrate something you measure it accurately.
Gauge- If you gauge the speed or strength of something you measure or calculate it.
So, Calibrate is the word which is similar in meaning to Gauge with standard.
19. (2) **Stupendous** – is used in the passage to mean very large, grand or impressive.
Negligible- not important because it is too small. So, Stupendous is opposite in meaning to Negligible.
20. (1) **Intense** is used in the passage to mean very great in strength or degree.
Fragile means not strong and healthy, weak. So, Intense is opposite in meaning to fragile.
21. (3)
23. (5)
26. (2)
28. (2)
31. (2)
22. (1)
24. (4)
27. (4)
29. (5)
25. (2)
30. (3)

$$\begin{aligned}
 I. x^2 - 14x + 48 &= 0 \\
 \Rightarrow x^2 - 8x - 6x + 48 &= 0 \\
 \Rightarrow x(x - 8) - 6(x - 8) &= 0 \\
 \Rightarrow (x - 6)(x - 8) &= 0 \\
 \Rightarrow x &= 6, 8
 \end{aligned}$$

$$\begin{aligned}
 II. y^2 + 6 &= 5y \\
 \Rightarrow y^2 - 5y + 6 &= 0 \\
 \Rightarrow y^2 - 3y - 2y + 6 &= 0 \\
 \Rightarrow y(y - 3) - 2(y - 3) &= 0 \\
 \Rightarrow (y - 2)(y - 3) &= 0 \\
 \Rightarrow y &= 2, 3 \\
 \therefore x &> y
 \end{aligned}$$

$$\begin{aligned}
 32. (3) \quad I. x^2 + 9x + 20 &= 0 \\
 \Rightarrow x^2 + 5x + 4x + 20 &= 0 \\
 \Rightarrow x(x + 5) + 4(x + 5) &= 0 \\
 \Rightarrow (x + 4)(x + 5) &= 0 \\
 \Rightarrow x &= -4, -5 \\
 II. y^2 + 7y + 12 &= 0 \\
 \Rightarrow y^2 + 4y + 3y + 12 &= 0 \\
 \Rightarrow y(y + 4) + 3(y + 4) &= 0 \\
 \Rightarrow (y + 3)(y + 4) &= 0 \\
 \Rightarrow y &= -3, -4 \\
 \therefore x &\leq y
 \end{aligned}$$

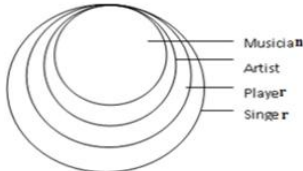
33. (3) I. $x^2 = 529$
 $\Rightarrow x^2 - 529 = 0$
 $\Rightarrow (x - 23)(x + 23) = 0$
 $\Rightarrow x = 23, -23$
 II. $y = \sqrt{529}$
 $y = 23$
 $\therefore x \leq y$
34. (1) I. $2x + 3y = 14$
 II. $4x + 2y = 16$
 On (i) $\times 2 -$ (ii)
 $x = \frac{5}{2}$
 $y = 3$
 $\therefore x < y$
35. (4) I. $x^2 - 1 = 0$
 $\Rightarrow (x + 1)(x - 1) = 0$
 $\Rightarrow x = -1, 1$
 II. $y^2 + 3y + y + 3 = 0$
 $\Rightarrow y^2 + 3y + y + 3 = 0$
 $\Rightarrow y(y + 3) + 1(y + 3) = 0$
 $\Rightarrow (y + 1)(y + 3) = 0$
 $\Rightarrow y = -1, -3$
 $\therefore x \geq y$
36. (4) Required No. of ways = ${}^5C_2 \times {}^3C_1$
 $= \frac{5!}{2!3!} \times 3$
 $= \frac{5 \times 4}{2} \times 3$
 $= 10 \times 3 = 30$
37. (2) CP = $11250 + 150 + 800 = 12200$
 \therefore Required SP = $\frac{115}{100} \times 12200 = 14030$
38. (2) Total interest earned = $2000 + 2000 + 200 + 4000 + 400 + 400 + 40 = 9040$ Rs.
39. (2) Let the no. be $(10x + y)$
 $10y + x = 10x + y - 27$
 $9x - 9y = 27$
 $x - y = 3$
 Let $x = 2k, y = k$
 $\therefore k = 3$
 $x = 6, y = 3$
 $\therefore k = 3$
 $x = 6, y = 3,$
 \therefore Required no. = 63
40. (5) Let original fraction = $\frac{x}{y}$
 $\frac{120x}{125y} = \frac{3}{5}$
 $\frac{40x}{40y} = \frac{1}{5}$
 $\frac{25y}{x} = \frac{5}{8}$
 $\frac{x}{y} = \frac{5}{8}$
41. (2) Required average area
 $= \frac{1}{5} (82 + 78 + 50 + 45 + 56) \times \frac{120 \times 90}{360}$
 $= 1866 \text{ m}^2$
42. (1) Required percentage
 $= \frac{82 - 50}{82} \times 100 \approx 39\%$
43. (4) Required difference
 $= |(56 + 78) - (45 + 49)| \times \frac{120 \times 90}{360}$
 $= \frac{40 \times 120 \times 90}{360} = 1200 \text{ m}^2$
44. (5) Required ratio = $\frac{56}{49} = \frac{8}{7}$
45. (4) $66\frac{2}{3}\%$ of area covered by rice = $\frac{82}{360} \times 120 \times 90 \times \frac{2}{3}$
 $= 1640 \text{ m}^2$
 \therefore In 1640 m^2 production of rice = 125 quintals
 \therefore in $(82 \times 30) \text{ m}^2$ production of rice = $\frac{125}{1640} \times 82 \times 30$
 $= 187.5$ quintals
46. (1) Difference between profit earned by A and B in 2003 = $250 - 200 = 50$ Cr
- In 2004 = $300 - 250 = 50$ Cr
 In 2005 = $350 - 250 = 100$ Cr
 In 2006 = $400 - 275 = 125$ Cr
 In 2007 = $375 - 350 = 25$ Cr
 In 2008 = $450 - 400 = 50$ Cr
 So difference is maximum in 2006
47. (4) % age increase in profit earned by company C from 2006 to 2007 = $\frac{450 - 300}{300} \times 100 = 50\%$
48. (2) Profit earned by all companies in 2003 = 850 Cr
 In 2004 = 900 Cr
 In 2005 = 1000 Cr
 In 2006 = 975 Cr
 In 2007 = 1175 Cr
 In 2008 = 1200 Cr
 So profit earned by all companies together is minimum in 2003
49. (4) Percentage = $\frac{250}{375} \times 100 = 66.67 \approx 67\%$
50. (3) Profit earned by A in 2005 = 250 Cr
 Profit earned by A in 2008 = 400 Cr
 Difference = $400 - 250 = 150$ Cr
51. (3) $(\div 2), (\div 2), (\div 2), \dots$
 Therefore, $474 \div 2 = 237$
52. (1) $(-19 \times 1), (-19 \times 2), (-19 \times 3) \dots$
 Therefore, $317 - 19 \times 3 = 260$
53. (4) $(\times 1 - 2), (\times 4 - 3), (\times 9 - 4), (\times 16 - 5), (\times 25 - 6)$
 $\therefore 3353 \times 16 - 5 = 53643$
54. (2) $1^4, 2^4, 3^4, 4^4, 5^4$
 Therefore, $5^4 = 625$.
55. (5) $(\div 2 + 0.5), (\div 2 + 0.5), \dots$
 Therefore, $18.5 \div 2 + 0.5 = 9.75$
56. (4) Let no. of students in class A, B and C be x, y and z
 $\therefore A = 83x$
 $B = 76y$
 $C = 85z$
 Now, $A + B = 79x + 79y$
 $B + C = 81(y + z) = 81y + 81z$
 $\therefore 83x + 76y = 79x + 79y$
 $4x = 3y$
 $\frac{x}{y} = \frac{3}{4}$
 And, $76y + 85z = 81y + 81z$
 $\frac{y}{z} = \frac{4}{5}$
 $\therefore x : y : z = 3 : 4 : 5$
 \therefore Required average = $\frac{83 \times 3 + 76 \times 4 + 85 \times 5}{12}$
 $= \frac{249 + 304 + 425}{12}$
 $= \frac{978}{12}$
 $= 81.5$
57. (3) Weight of the student who left the class = $45 + 49 \times (\frac{1}{10})$
 $= 45 + 4.9$
 $= 49.9$ kg
58. (4) equaled rate of interest for C.I. = $4 + 4 + \frac{4 \times 4}{100}$
 $= 8.16$
 \therefore Required amount = $\frac{80}{8} \times 8.16$
 $= 10 \times 8.16 = 81.60$ Rs.
59. (3) water in mixture = $\frac{15}{100} \times 200 = 30$ litres
 Let required quantity of milk = x
 $\frac{170 + x}{30} = \frac{7}{1}$
 $150 + x = 210$
 $x = 40$ litres

Grand Test – SPP 180651

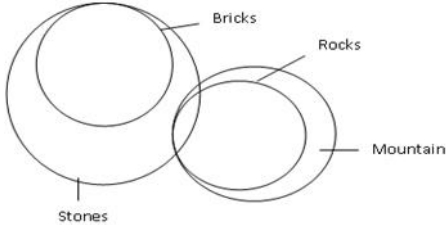


60. (4) % pass in both the subjects = $(60 + 70) - (100 - 20)$
 = $130 - 80$
 = 50%
 $\therefore 50\% = 2500$
 $100\% = \frac{2500}{50} \times 100$
 = 5000

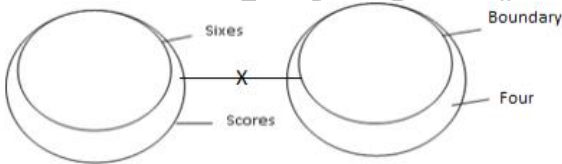
- 61. (2)
- 62. (3) $650 + 1190 + 1599 = 3439.$
- 63. (4) $1.5625 + 0.75 - 0.3125 = 2.0000$
- 64. (3) $231 + 24 = 255$
- 65. (1) $270 + 272 + 132 = 674.$
- 66. (1) Conclusion I follows.



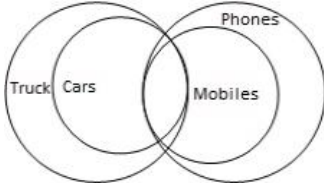
67. (2) Only Conclusion II follows



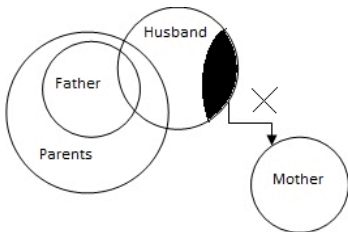
68. (1) Only conclusion I follow



69. (2) Only Conclusion II follows



70. (5) Both conclusion follows



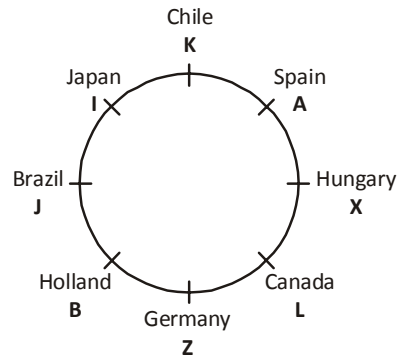
71 – 75.

Religion	Color	Drink
Muslim	Yellow	Milk
Hindu	Blue	Tea
Christian	Red	Coffee
Sikh	Pink	Banana Shake

Order of Houses: Yellow-Blue-Red-Pink

- 71. (3)
- 72. (4)
- 73. (5)
- 74. (1)
- 75. (3)

76 – 80.



- 76. (1)
- 77. (5)
- 78. (3)
- 79. (5)
- 80. (1)

81 – 85.

Floor No	Person	Food
8	Q	Mcpuff
7	R	Maggie
6	V	Veg parcel
5	U	Roll
4	W	Pizza
3	T	Veg Fried Rice.
2	P	Litti
1	S	Burger

- 81. (1)
- 82. (2)
- 83. (4)
- 84. (3)
- 85. (2)

86. (2) I. is not necessarily true but II. is obviously true ; otherwise why will ads like this be given?

87. (1) The notice given by the XYZ department clearly mentions the ill-effect of drinking. The motive behind mentioning the ill-effect must be to restrict drinkers from drinking. So, I must be assumed. But II is not implicit.

88. (4) The statement does not mention the specific reason behind the view of the speaker. Hence, both I and II are not implicit.

89. (5) Both I and II must be assumed.

90. (1) FAO made such a declaration because it must be assuming the problem quite alarming. Hence I is assumed but II is not necessarily valid.

91 – 95.

Logic:- There are six numbers and six words in the input. The three numbers are pleightd in the beginning and the remaining three numbers are pleightd in the last. The First three numbers are arranged in ascending order from left to right with last three numbers are arranged in descending order from right to left. After that the six words are arranged in alphabetical order in the middle.

Input; 67 member Zaika 19 hearing 83 Nanji 49 elight 77 jackle 37

Step I : 19 67 member Zaika hearing Nanji 49 elight 77 jackle 37 83

Step II: 19 37 67 member Zaika hearing Nanji 49 elight jackle 77 83

Step III: 19 37 49 member Zaika hearing Nanji elight jackle 67 77 83

Step IV: 19 37 49 elight member Zaika hearing Nanji jackle 67 77 83

Step V: 19 37 49 elight hearing member Zaika Nanji jackle 67 77 83

Grand Test – SPP 180651

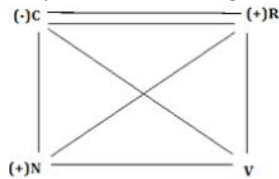
Step VI: 19 37 49 elight hearing jackle member Zaika
Nanji 67 77 83

Step VII: 19 37 49 elight hearing jackle member Nanji
Zaika 67 77 83

'Step VII' is the final step of this input.

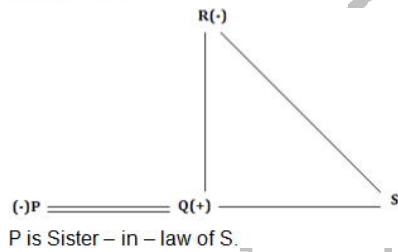
- 91. (4) seven steps are needed to complete the arrangement.
- 92. (3) It is 'step V'.
- 93. (4) 'Step I' is the '19 67 member Zaika hearing Nanji 49 elight 77 jackle 37 83'
- 94. (2) '19 37 49 elight hearing jackle member Nanji Zaika 67 77 83' is the final arrangement.
- 95. (1) In step IV '19 37 49 elight member Zaika hearing Nanji jackle 67 77 83'

- 96. (2) 7th position from the right is the 'Zaika'



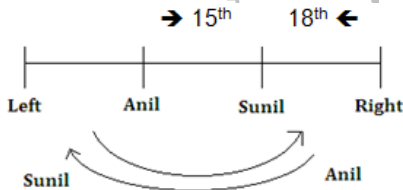
N is brother of v.

- 97. (2)



P is Sister – in – law of S.

- 98. (3)



After interchange of their places Anil's positions is 29th from the left.

Therefore total number of boys = (29 + 18 – 1) = 46.

- 99. (5)

- 100. (5)